

# WHAT CAN I RECYCLE?

Any recycling collection container will take ALL recyclables. Look for ALL-IN-ONE recycling bins next to trash cans around campus!



## CORRUGATED CARDBOARD

All corrugated cardboard boxes are collected separately. Place flattened boxes in the hall for custodial pick-up or put them in the blue open top cart labeled "Cardboard Only" in trash room areas.

**PLEASE FLATTEN ALL BOXES**

**NO**

Foam or other plastic packing materials



## ALUMINUM & METAL CANS

Emptied aluminum & bi-metal beverage cans and clean aluminum foil. Food cans made of steel or tin (please rinse), empty aerosol cans.

**NO**

Food trays, pie plates, folding chair frames, other metals



## GLASS & PLASTIC

Emptied clear, brown, green, and blue glass food and drink containers. All narrow neck plastic bottles are recyclable.

**NO**

Light bulbs, window glass, mirror glass, ceramics or pottery, heat resistant glass, plastic bags, cooking oil bottles, cups or other wide mouth containers, Styrofoam, aseptic boxes, juice pouches.

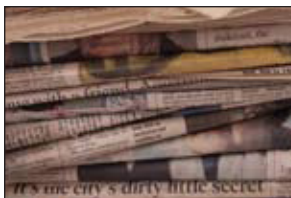


## PAPER

Computer and writing paper, junk mail, colored paper, post-it notes, brown paper grocery bags, file folders, paper ream wrappers, envelopes (windowed are OK), cardboard FedEx envelopes, all magazines and telephone books, catalogs, soft-back books. Paper clips and staples are OK. Hardback books and secure documents are collected separately, call 292-1528 for pick-up.

**NO**

Facial or toilet tissue, paper towels, plates, napkins, gift wrap, diapers, pet food bags, plastic-covered FedEx or self-sealing envelopes, metal clamps or metal brackets such as in a hanging file folder (folder is OK) or document binders. Please remove plastic tabs from file folders.

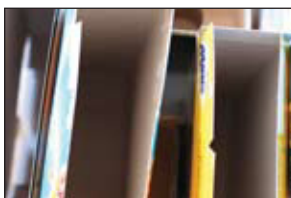


## NEWSPAPER

Newspaper and all inserts.

**NO**

Plastic bags or bands.



## SINGLE-PLY CARDBOARD

All single-ply or chipboard product-packaging boxes.

**NO**

Packing material, towel or tissue rolls, frozen food boxes, wax or plastic liners.



## ELECTRONICS, BATTERIES, INK CARTRIDGES & FLUORESCENT BULBS

Unwanted computers should be taken to Surplus. Make delivery arrangements at [surplus.tot@osu.edu](mailto:surplus.tot@osu.edu) or call 614-292-USED. For batteries, fluorescent bulbs and ballasts call 292-1284 for pick-up. Ink cartridges can be refilled and reused. Unwanted cell phones should be donated. Call 292-1528 for locations.

For more information, visit [recycle.osu.edu](http://recycle.osu.edu)



Scarlet,  
Gray &  
Green

# Thanks for recycling!

For more information about campus recycling visit [recycle.osu.edu](http://recycle.osu.edu)